

PREVIEWING UPCOMING EXHIBITIONS, EVENTS, SALES AND AUCTIONS OF HISTORIC FINE ART

AMERICAN FINE ART

M A G A Z I N E

ISSUE 23

SEPT./OCT. 2015



DISPLAY UNTIL 10/28/15
\$7.95



0 71486 02255 8 10>

Well-rounded Selection of American Art

Approximately 100 American fine art lots available during Grogan & Company's September 27 auction

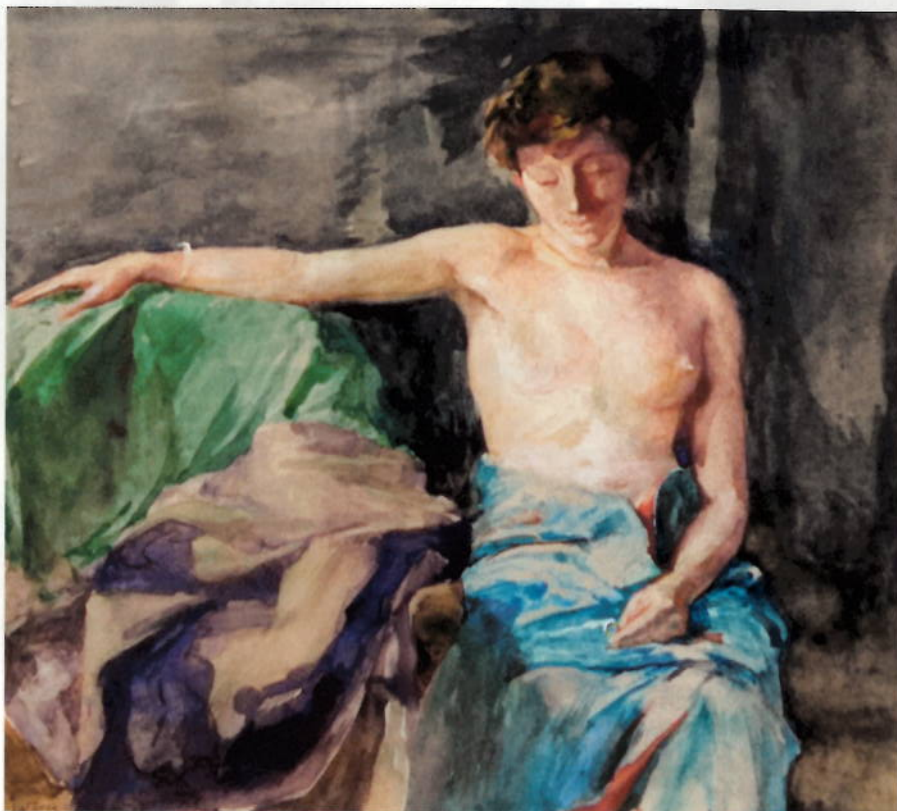
September 27

Grogan & Company

20 Charles Street
Boston, MA 02114
t: (617) 720-2020
www.groganco.com

Around 400 lots will cross the block during Grogan & Company's *September Auction* on Sunday, September 27, with approximately 100 of the lots being American fine art pieces. Primarily featured is work from the late 19th to the mid-20th centuries, including items from John La Farge, John Koch, Frank Weston Benson, Lilla Cabot Perry, John Whorf, and George Hawley Hallowell.

"Like all of our sales, the American art portion is the strongest, but this is a very well-rounded sale. We have representation from all genres and time periods and locations," says Lucy P. Grogan, vice



John La Farge (1835-1910), *Girl with the Ring*, 1890. Watercolor on paper, 11½ x 12½ in. Estimate: \$20/40,000



George Hawley Hallowell (1871-1926), *Italian Fiesta Day*. Oil on canvas, 28 x 46 in. Estimate: \$5/8,000

president and gallery director of Grogan & Company. Grogan adds one of the most interesting aspects of the September sale is the provenances of the fine art lots, with many from New England estates.

One of the New England estates brings to market three strong works: La Farge's 1890 painting *Girl with the Ring*, Koch's *The Batchelder Family at Moraine Farm, Beverly, Massachusetts* from 1951, and Benson's 1927 watercolor *Winter Hills*.

La Farge (1835-1910) is most recognized for his stained glass windows and his paintings from the South Pacific. *Girl with the Ring* (est. \$20/40,000) was painted during his time in the South Seas, but is not his traditional subject matter as "the woman represented looks

to be a European or American woman,” says Grogan. “...I do think this will garner a lot of interest because it is so unusual and so beautiful. I think that it’s uncommon to see such a classically rendered nude. Often they’re covered in drapery and they were done as studies for stained glass. It is interesting to see a stand-alone figure like this.”

As Grogan shares, Koch painted many affluent families from the New York City and greater New England area. “In order to do this successfully, he had to develop personal relationships with the families he’s painting. You see that in the painting of the Batchelders [*The Batchelder Family at Moraine Farm, Beverly, Massachusetts* (est. \$10/20,000)],” Grogan elaborates. “There is a sketch that accompanies the painting...It says, ‘For Katie and George, affectionately, John Koch, July 1951.’ Clearly he spent a lot of time with them in the summer of the 1950s and had a rapport with them. It wasn’t just a formal sitting for the artist; there was a personal relationship.”

Estimated at \$8,000 to \$12,000 is Benson’s *Winter Hills*, a watercolor of a wintery waterway. “I think this work is really lively, and a bit more abstract than I’m used to seeing in his work,” says Grogan. “There is a really great combination in dry and wet work with the paint that gives it a great energy.”

Also available is Hallowell’s *Italian Fiesta Day* (est. \$5/8,000). Hallowell had



John Koch (1909-1978), *The Batchelder Family at Moraine Farm, Beverly, Massachusetts*, 1951. Oil on canvas, 25 x 30 in. **Estimate: \$10/20,000**

a range of styles, from impressionistic watercolor landscapes to realist oils of iconic American landscapes. “He also did a series of works, like *Italian Fiesta Day*, that are lively and figural with a ton going on,” says Grogan. “...The landscape is very well-rendered in the background. That does relate to his more recognizable work.”

Other standouts in the sale are Perry’s *Portrait of a Seated Woman* (est. \$2/4,000);

Whorf’s *Boston Common Winter View* (est. \$3/5,000) with the iconic Massachusetts State House in the background; Emile Gruppe’s *Morning, Gloucester Harbor* (est. \$4/6,000); and an Edmund Charles Tarbell work of a jockey that estimates for \$30,000 to \$50,000.

The September Auction will take place at noon on September 27, with a preview exhibition open to the public on September 24 at noon. ■



Frank Weston Benson (1862-1951), *Winter Hills*, 1927. Watercolor on paper, 19¼ x 24¾ in. **Estimate: \$8/12,000**



Edmund Charles Tarbell (1862-1938), *Jockey*. Oil on canvas, 25 x 27 in. **Estimate: \$30/50,000**